



**Mountain States
Meat Goat Association**

2010 Merchandise Catalog

2010 Merchandise Catalog

Table of Contents

- *Hats – Pages 3-4*
- *Coats – Pages 5-7*
- *Jackets – Pages 8-10*
- *Vests – Pages 11-12*
- *Sweatshirts*
 - *Crewneck – Pages 13-14*
 - *Hooded – Pages 15-16*
 - *Zippered hood – Pages 17-18*

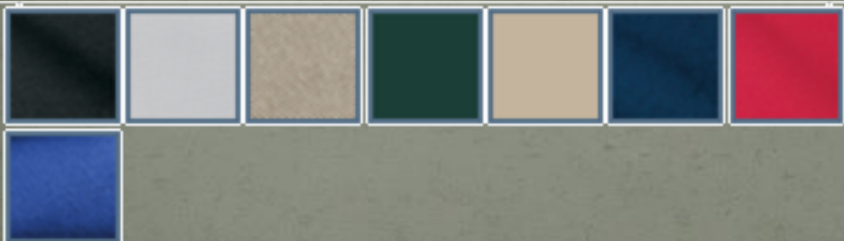


Ball Cap



- Sandwich bill
- 100% cotton, washed twill
- Unstructured, low profile

Price: \$11



High Top Hat



- 65/35 poly/cotton
- Structured, mid-profile
- Adjustable closure

Price: \$11





Timberline Coat


- Hooded
- Heavyweight 12 oz. cotton canvas shell
- Body - 6 oz. Polyfill quilted lining
- Hood/Sleeves - 4 oz. Polyfill quilted lining
- Two front pockets w/zippers
- One inner chest pocket w/zipper
- Rib waistband and cuffs
- Sizes S - 6XLT

Price: \$80

Sizes over 2XL : \$85



Sizes S - 4XL available in all colors.

Sizes 5XL - 6XLT are only available in colors marked with 



Pathfinder Coat


- Corduroy collar (brown or black)
- Heavyweight 12 oz. cotton canvas shell
- Body - 6 oz. Polyfill quilted lining
- Hood/Sleeves - 4 oz. Polyfill quilted lining
- Two front pockets w/zippers
- One inner chest pocket w/zipper
- One lower left pocket with zipper
- Adjustable snaps on waist and cuff tabs
- Sizes S - 6XLT



Price: \$75

Sizes over 2XL : \$80

Sizes S - 4XL available in all colors.

Sizes 5XL - 6XL & XLT - 6XLT are only available in colors marked with 



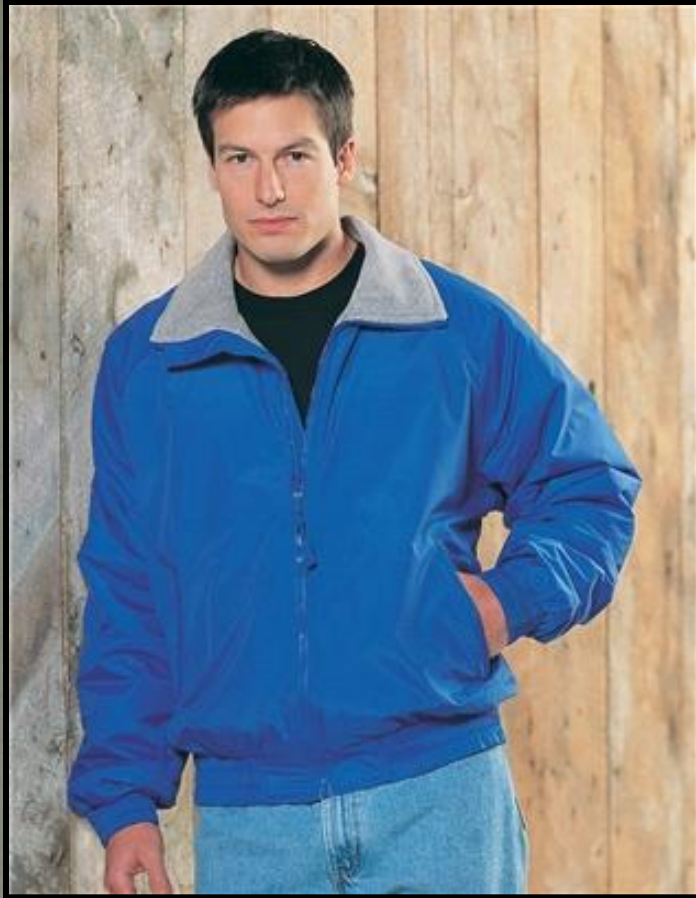
Durango

- Lined denim coat
- Brown corduroy collar
- 12 oz. arctic fleece body lining
- 100% quilted-lined sleeves
- 14.5 oz 100% cotton high quality denim
- Chest pockets with flaps
- Welt pockets
- Metal buttons and rivets
- Sizes XS – 4XL

Price: \$69

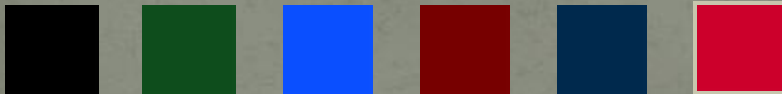
Sizes over 3XL : \$73





Survivor

- Medium-weight Toughlan nylon shell
- Windproof & water resistant polyurethane-coated shell
- Lined with heather gray heavyweight 10.5 oz anti-pilling Panda fleece
- 2 front pockets with zippers
- One inner right chest pocket with zipper
- Double-stitched seams, raglan sleeves, elastic cuffs and waistband
- Adult sizes S - 4XL
- Youth sizes S - XL



Price: \$55

Sizes over 2XL : \$58

Youth: \$46

Competitor



- Teklon nylon shell
- Lightweight fleece lining
- Nylon sleeve lining
- Slash zippered pockets
- Interior zippered pocket
- Elastic cuffs w/adjustable hook & loop tabs
- Elastic waistband
- Sizes XS – 6XL

Price: \$43

Sizes over 2XL : \$45





Conqueror

- Heavy weight Toughlan nylon shell
- Shell is windproof, water resistant, and coated with polyurethane
- Teklon nylon shell
- 11.5 oz. anti-pilling panda fleece lining
- 2 front slash pockets
- Adjustable drawstring with cord locks
- Sizes XS – 6XLT



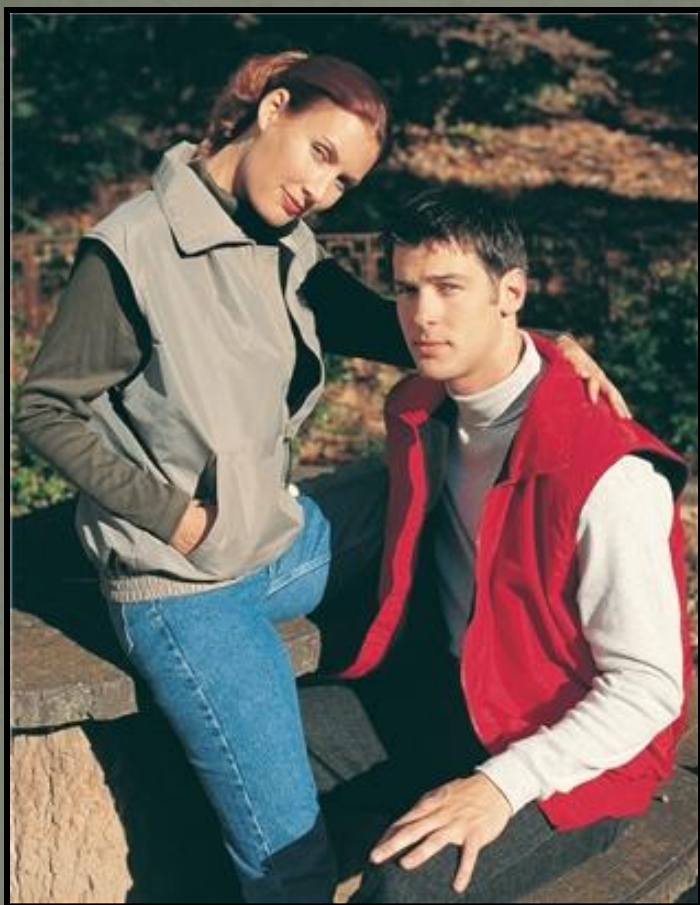
Price: \$70

Sizes over 2XL : \$75



Sizes S – 4XL available in all colors.

Sizes 5XL – 6XLT are only available in colors marked with 



Ridge Rider Vest


- Toughlan nylon shell
- Windproof & water resistant
- Fully lined with super heavyweight 11.5 oz anti-pilling panda fleece
- Collar with polyfill for added warmth
- Two front pockets with zippers
- One inner right chest pocket
- Elastic waistband
- Sizes XS – 6XLT



Price: \$42

Sizes over 2XL : \$44

Sizes XS – 4XL available in all colors.

Sizes 5XL – 6X & LT – 6XLT are only available in colors marked with 

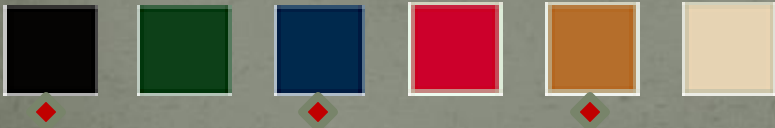


Lodestar Vest


- Heavy weight 12 oz. cotton canvas body
- 6 oz. polyfill quilted lining
- 2 front pockets, one inner right chest pocket with zipper
- Rib collar, elastic on waist
- Sizes S – 6XLT

Price: \$45

Sizes over 2XL : \$49



Sizes S – 4XL available in all colors.

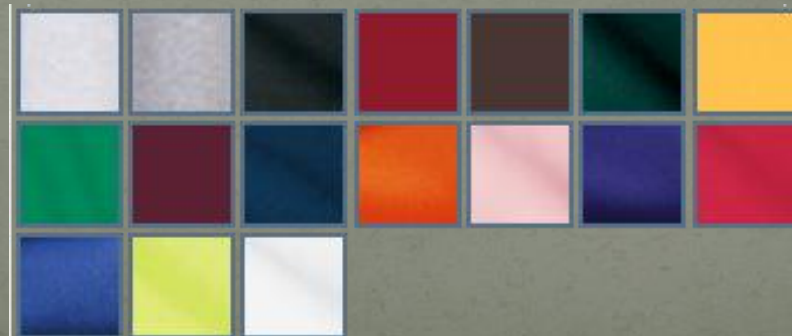
Sizes 4XL – 6X & LT – 6XLT are only available in colors marked with 

Crewneck Sweatshirt

- 9 ounce
- 50/50 cotton/poly fleece
- Spandex in collar, cuffs, & waistband
- Sizes S – 4XL

Price: \$30

Sizes over XL : \$32

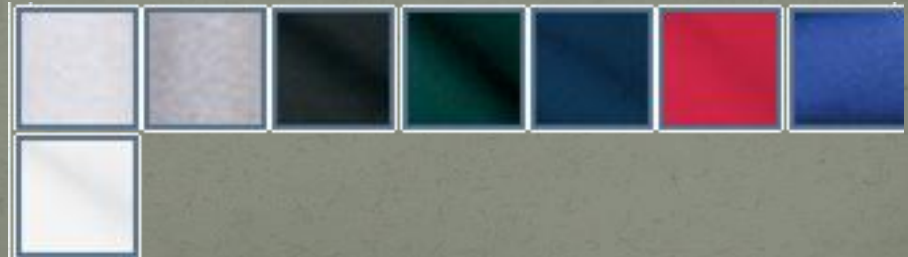


Youth Crewneck Sweatshirt



- 7.8 ounce
- 50/50 cotton/poly fleece
- Spandex in collar, cuffs, & waistband
- Sizes XS – XL

Price: \$25

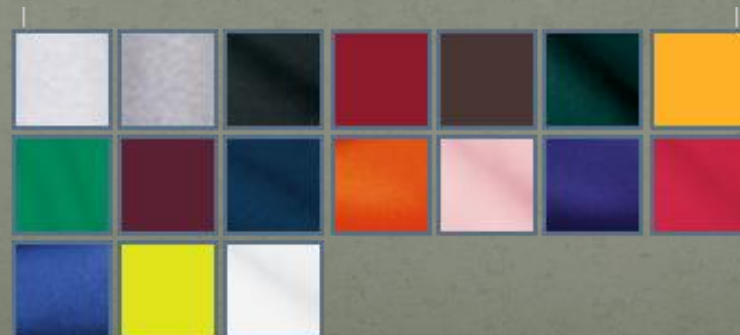


Hooded Pullover Sweatshirt

- 9 ounce
- 50/50 cotton/poly fleece
- Two-ply hood
- Front pouch pocket
- Sizes S – 4XL

Price: \$37

Sizes over XL : \$39



Youth Hooded Pullover Sweatshirt

- 7.8 ounce
- 50/50 cotton/poly fleece
- Two-ply hood
- Front pouch pocket
- Sizes XS – XL

Price: \$30



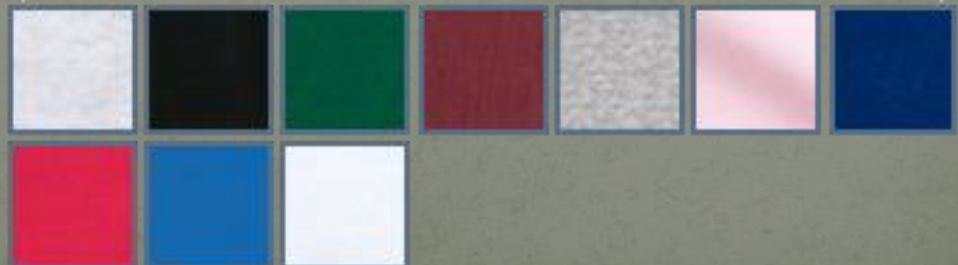
Hooded Zippered Sweatshirt



- 8 ounce
- 50/50 cotton/poly NuBlend pill-resistant fleece
- Rib knit cuffs & waistband w/spandex
- Front pouch pockets
- Sizes S – 3XL

Price: \$37

Sizes over XL: \$39



Youth Hooded Zippered Sweatshirt



- 8 ounce
- 50/50 cotton/poly NuBlend pill-resistant fleece
- Rib knit cuffs & waistband w/spandex
- Front pouch pockets
- Sizes S – L

Price: TBA

